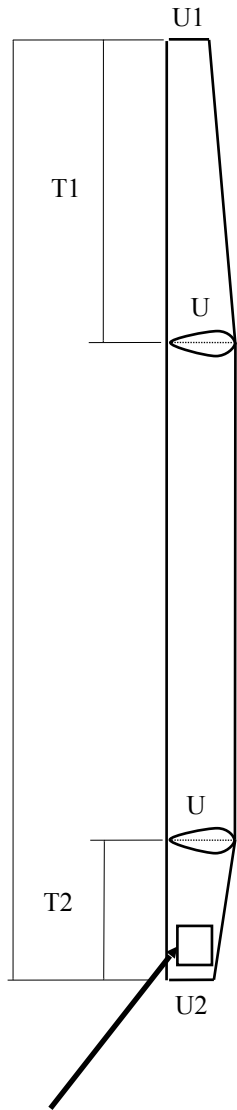


International A-Catamaran Measurement Certificate

Mast



Mast Measurement

(Is half of the surface area of the mast excluding top and bottom surface)

L [m]	9,037	U [m]	0,335
T1 [m]		U1 [m]	
T2 [m]		U2 [m]	
MA [m2]	1,5137		
Serial N°	1556		
Builder	Fiberfoam		
Material	Carbon		

Calculation of MA:

$$MA = U \times (L - T1 - T2) / 2 + T1 \times (U + U1) / 4 + T2 \times (U + U2) / 4$$

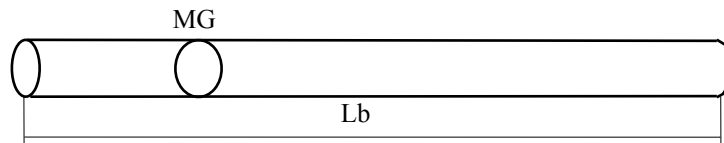
Boom Measurement

(Only required if the profile height is more that 1.5 of the width)

Length	Lb [m]	
Mean Grith	MG [m]	
Boom Area	BA [m2]	

Calculation of BA:

$$BA = 1/2 \times MG \times Lb$$



Measurer to mark the following on bottom starboard side of mast.

MA = ***

SN = ***

Date ***

Signature ***

Comments

All measurements are in meters and to three decimal places.

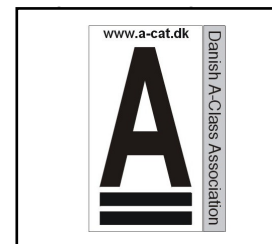
Measurers Declaration: I declare that I have measured this mast & boom and they comply with all the class rules.

Date of Measurement: 28/8/2022

Measurer's Name: Thomas Paasch

Appointed by: Danish Sailing Association

Measurer's Signature:



Measurer's Stamp

* Refer current measurers guidelines when completing form.