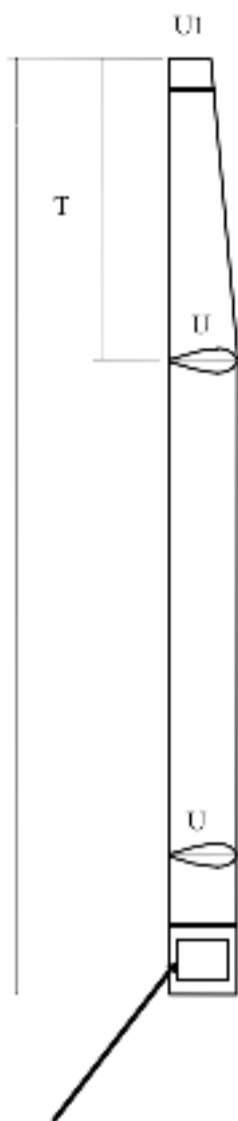


# International A-Catamaran Measurement Certificate

## Mast & Boom Measurement Form



### Mast Measurement

(Is half of the surface area of the mast excluding top and bottom surface)

L [m]	9,035	U [m]	0,365
T [m]	8,535	U1 [m]	0,294
MA [m <sup>2</sup> ]	1,497		
Serial N°	1039		
Builder	Fiberfoam		
Material	Carbon		

### Calculation of MA:

$$MA = U \times (L-T)/2 + T \times (U + U1)/4$$

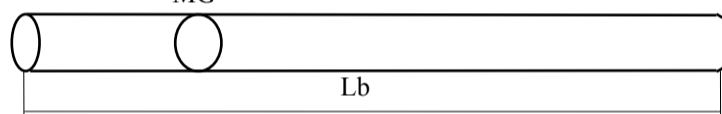
### Boom Measurement

(Only required if the profile height is more than 1.5 of the width)

Length	Lb [m]	
Mean Grith	MG [m]	
Boom Area	BA [m <sup>2</sup> ]	

### Calculation of BA:

$$BA = 1/2 \times \frac{MG}{Lb} \times Lb$$



Measurer to mark the following on bottom starboard side of mast.

MA = \*\*\*

SN = \*\*\*

Date \*\*\*

Signature \*\*\*

*All measurements are in meters and to three decimal places.*

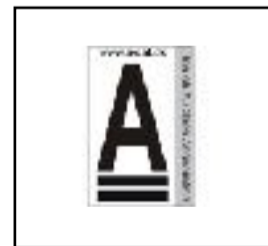
**Measurers Declaration:** I declare that I have measured this mast & boom and they comply with all the class rules.

**Date of Measurement:** 1/7/2017

**Measurer's Name:** Thomas Paasch

**Appointed by:** Danish Sailing Association

**Measurer's Signature:** *Thomas Paasch*



Measurer's Stamp

\* Refer current measurers guidelines when completing form.