

International A-Division Catamaran Measurement Certificate

Mast & Boom Measurement Form

Refer current measurers guidelines when completing form.

All measurements are in meters and to three decimal places.

www.a-cat.org

Calculation of MA:

General mast formula

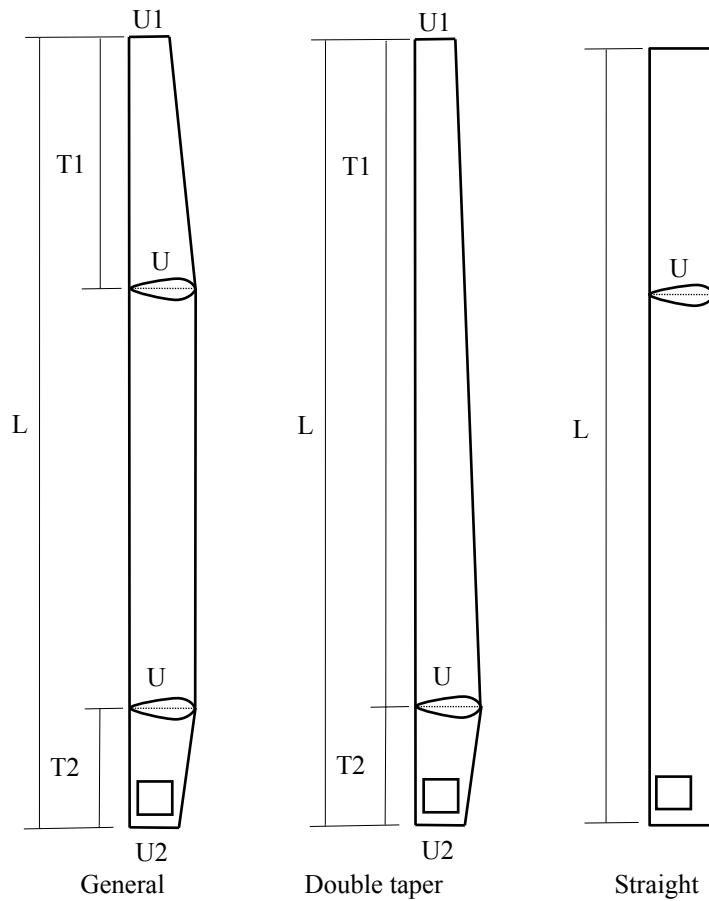
$$MA = U \times (L - T1 - T2) / 2 + T1 \times (U + U1) / 4 + T2 \times (U + U2) / 4$$

Double taper mast

$$MA = T1 \times (U + U1) / 4 + T2 \times (U + U2) / 4$$

Straight mast

$$MA = U \times L / 2$$

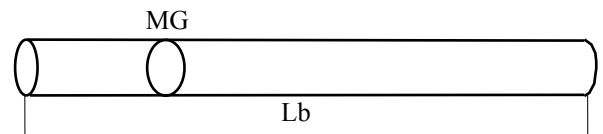


Mast (Is half of the surface area of the mast excluding top and bottom surface)	
L [m]	9,040
T1 [m]	8,540
T2 [m]	0,500
U [m]	0,366
U1 [m]	0,293
U2 [m]	0,340
MA [m2]	1,495

Calculation of BA:

$$BA = 1/2 \times MG \times Lb$$

Boom Measurement (Only required if the profile height is more than 1.5 the width)	
Length, Lb [m]	
Mean Girth, MG [m]	
Boom Area, BA [m2]	



Measurer to mark the following on bottom starboard side of mast.

MA = *** Date *** SN = *** Signature ***

Mast Identification

Serial N°	1514	Material	Carbon
Builder	Fiberfoam		

Comments

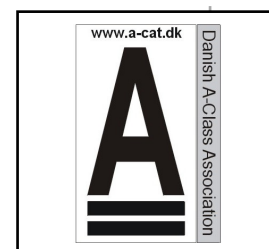
Measurers Declaration: I declare that I have measured this mast & boom and they comply with all the class rules.

Date of Measurement: 27-1-2024

Measurer's Name: Frank Lavrsen

Appointed by: Danish Sailing Association

Measurer's Signature: 



Measurer's Stamp